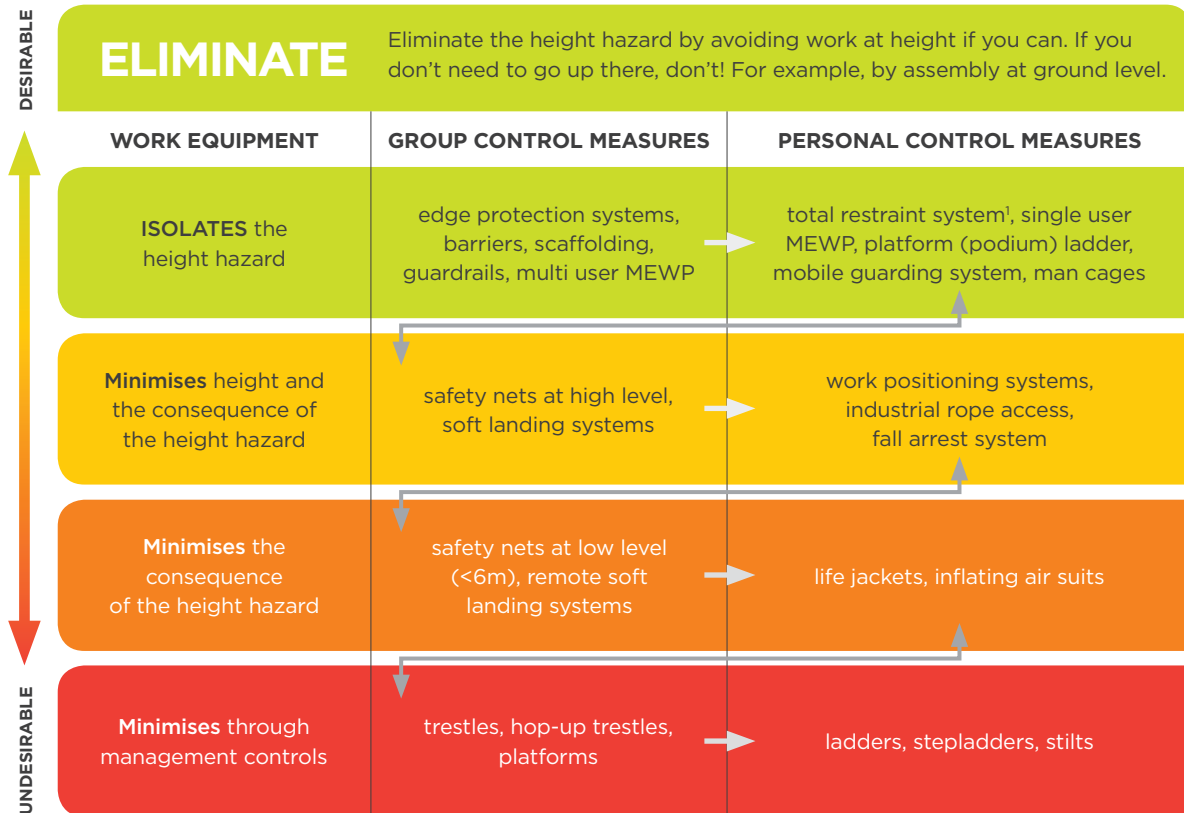


THE SELECTION OF WORK EQUIPMENT LINKED TO THE HIERARCHY OF CONTROLS



This fact sheet is part of the *Working Safely at Height Toolkit* that supports the Best Practice Guidelines for Working at Height in New Zealand.

- > Fact Sheet 1: Planning a safe approach to working at height
- > Fact Sheet 2: Selecting the right equipment for working safely at height
- > Fact Sheet 3: Short duration work at height
- > Fact Sheet 4: Edge protection

- > Fact Sheet 5: Temporary work platforms
- > Fact Sheet 6: Total restraint system

For additional guidance on safe working at height see:

- > Be Safe Working on Roofs
- > Safe Working with Ladders and Stepladders
- > Health and Safety In Contracting Situations

¹ While a harness is classified as PPE, which is a minimisation control, a total restraint system is more desirable than other minimisation controls and can be considered isolation of the hazard.